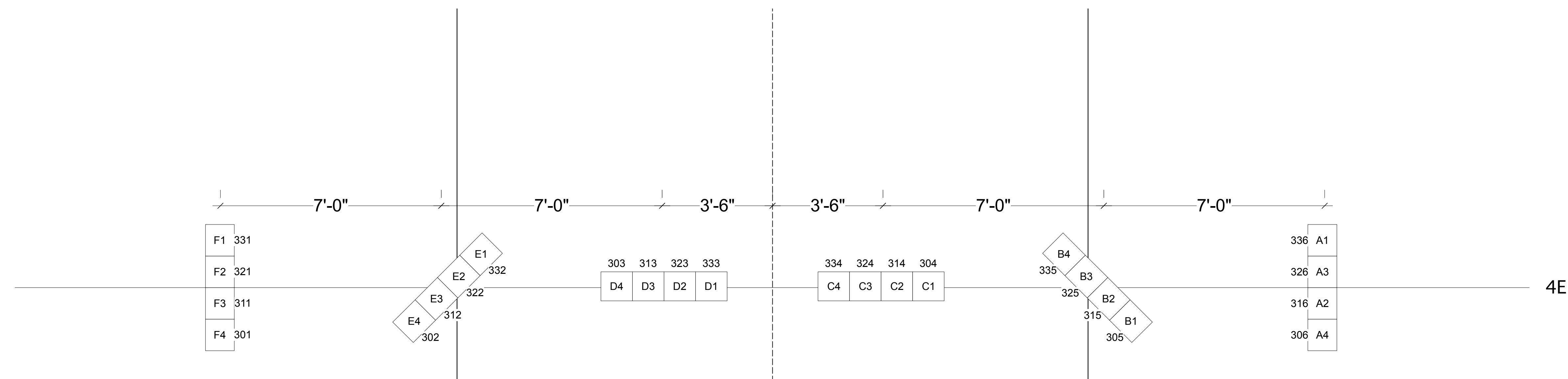


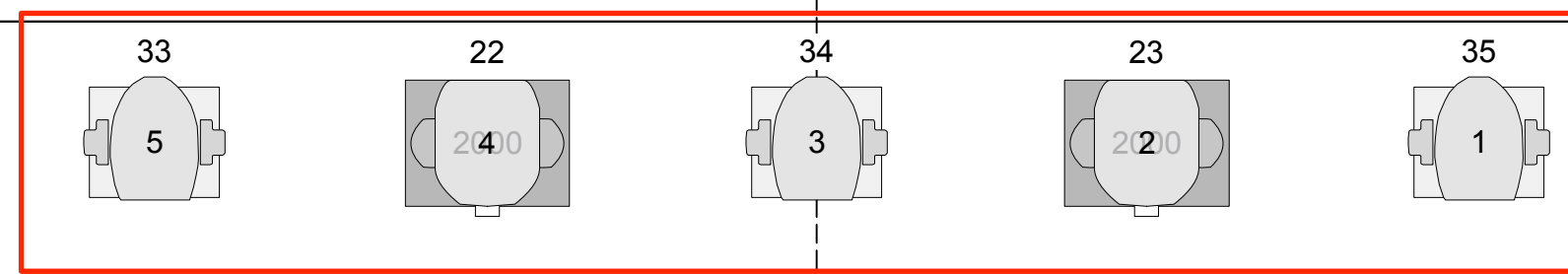
Instruments	Num In Inventory	Used	Remaining
MAC2000 Profile	8	8	0
Mac 600	8	8	0
MAC 301	19	12	7
MAC 101	11	8	3
Source 4 26deg	66	36	30
Source 4 PAR WFL	25	21	4
6" Fres	30	30	0
PAR 64 WFL	31	28	3
CYC light	24	24	0
Source 4 50deg	31	4	27
Colorblast 12	0	6	-6
Colorblast 6	0	2	-2
Source 4 19deg	28	2	26

Accessories	Num In Inventory	Used	Remaining

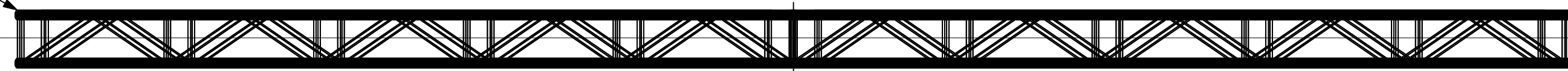
Legend	Purpose	Color	Unit Number	Channel



Designer will place all units that exist on the deck

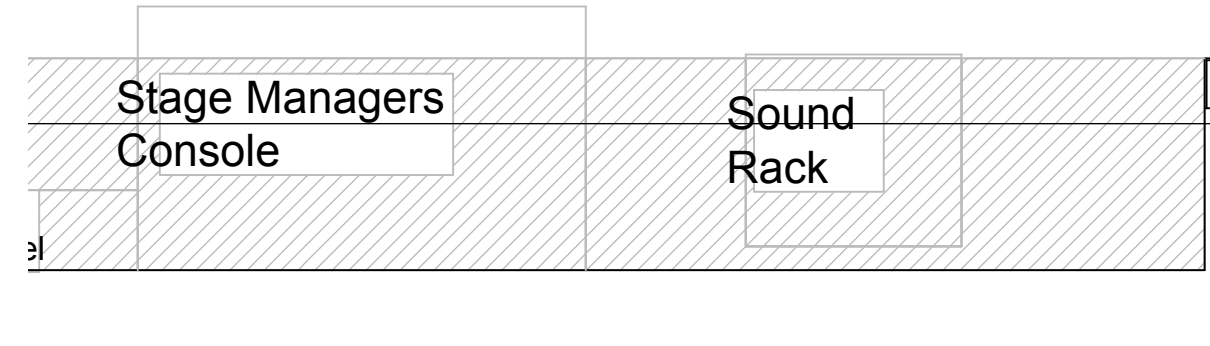
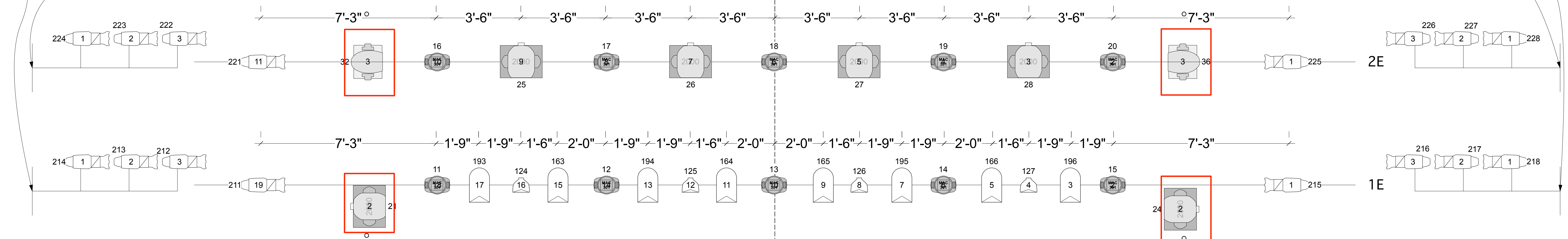


This is rigged to 3rd Electric

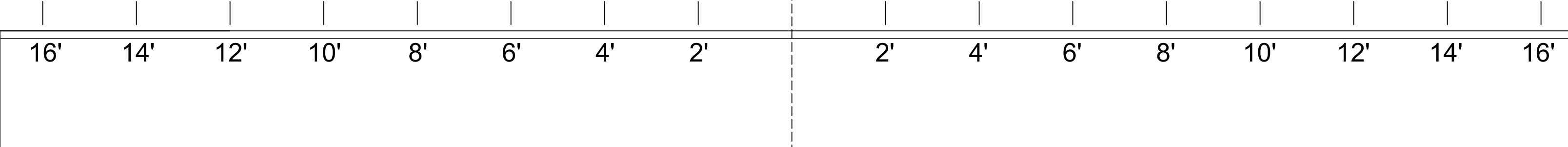


Taildowns on the Pipe End of their electric

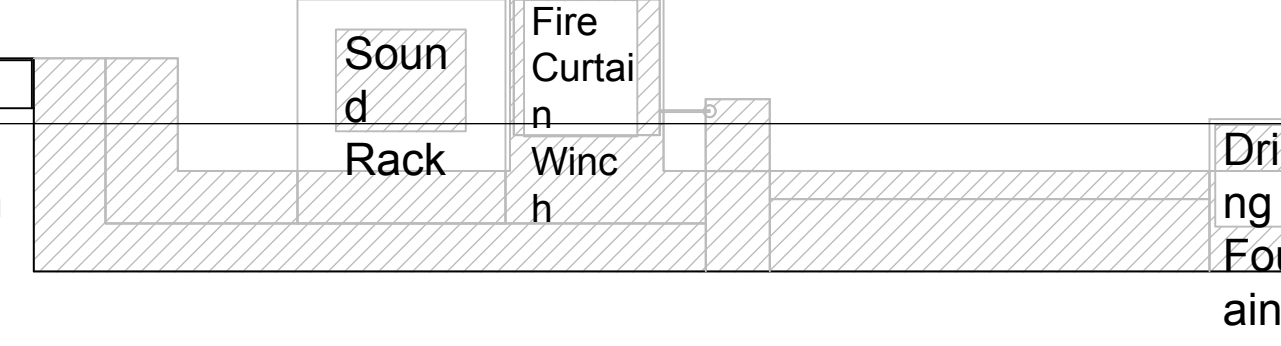
Taildowns on the Pipe End of their electric



NOTE: Proscenium opening 16' 5" high.



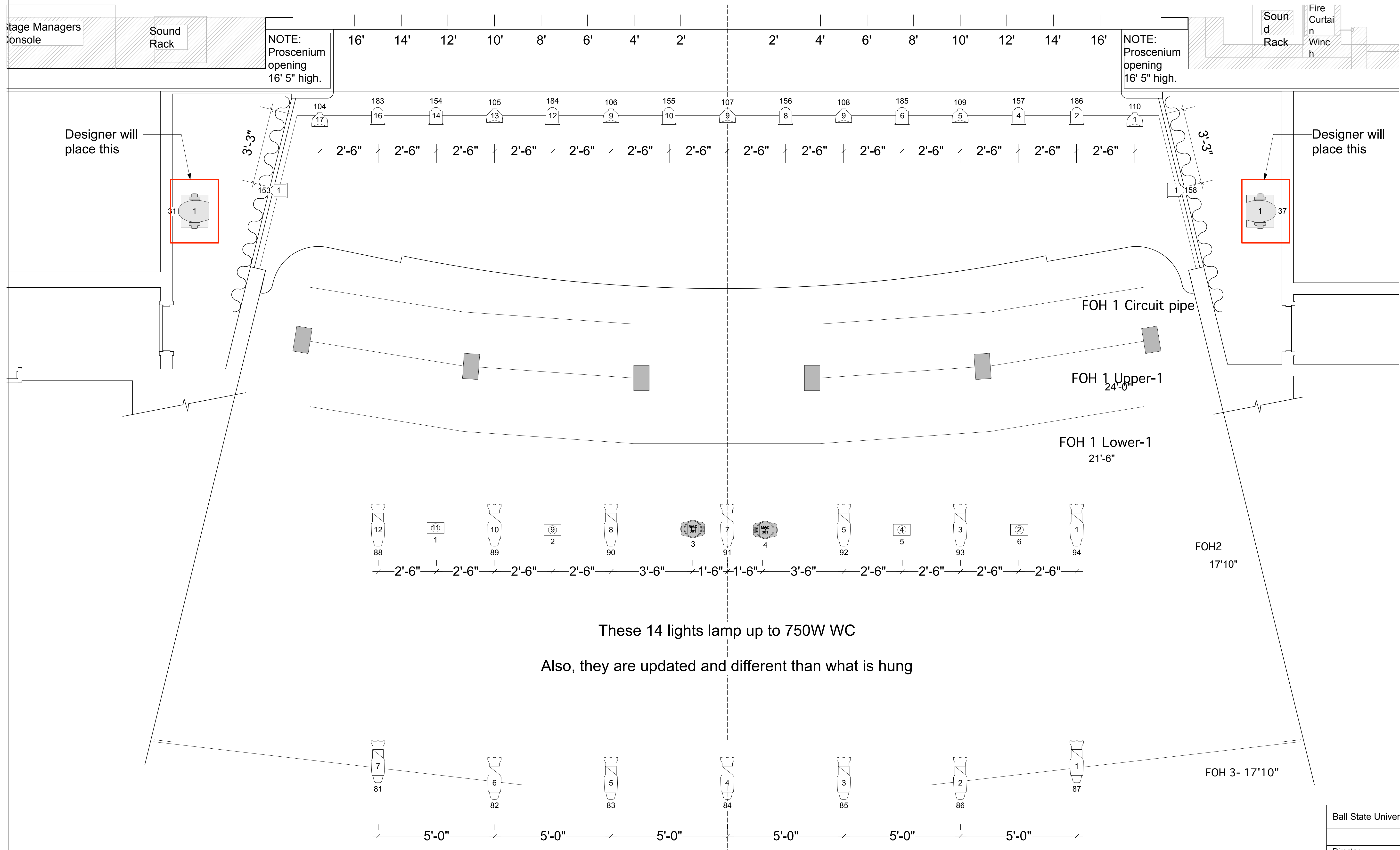
NOTE: Proscenium opening 16' 5" high.



Ball State University Department of Theatre and Dance		
Next to Normal		
Director:	Beth Turcotte	Scale: 1/2" = 1' - 0"
Scenic Designer:	R. B. "Mickie" Marie	Date: 8-19-14
Costume Designer:	Patty Daehn	Drawn By:
Lighting Designer:	R. B. "Mickie" Marie	R. B. "Mickie" Marie
Sound Designer:	Matthew Tibbs	
Drawing:	Hanging Plot over stage	Drawing # 1 of 5

Instruments	Num In Inventory	Used	Remaining
MAC2000 Profile	8	8	0
Mac 600	8	8	0
MAC 301	19	12	7
MAC 101	11	8	3
Source 4 26deg	66	36	30
Source 4 PAR WFL	25	21	4
6" Fres	30	30	0
PAR 64 WFL	31	28	3
CYC light	24	24	0
Source 4 50deg	31	4	27
Colorblast 12	0	6	-6
Colorblast 6	0	2	-2
Source 4 19deg	28	2	26

Accessories	Num In Inventory	Used	Remaining
Legend			
Purpose			
Color			
Unit Number			
Channel			



These 14 lights lamp up to 750W WC
 Also, they are updated and different than what is hung

Ball State University Department of Theatre and Dance			
Next to Normal			
Director:	Beth Turcotte	Scale:	1/2" = 1' - 0"
Scenic Designer:	R. B. "Mickie" Marie	Date:	8-19-14
Costume Designer:	Patty Daehn	Drawn By:	R. B. "Mickie" Marie
Lighting Designer:	R. B. "Mickie" Marie	Sound Designer:	Matthew Tibbs
Drawing: Hanging Plot FOH			Drawing # 2 of 5

Instruments	Num In Inventory	Used	Remaining
MAC2000 Profile	8	8	0
Mac 600	8	8	0
MAC 301	19	12	7
MAC 101	11	8	3
Source 4 26deg	66	36	30
Source 4 PAR WFL	25	21	4
6" Fres	30	30	0
PAR 64 WFL	31	28	3
CYC light	24	24	0
Source 4 50deg	31	4	27
Colorblast 12	0	6	-6
Colorblast 6	0	2	-2
Source 4 19deg	28	2	26

Accessories	Num In Inventory	Used	Remaining

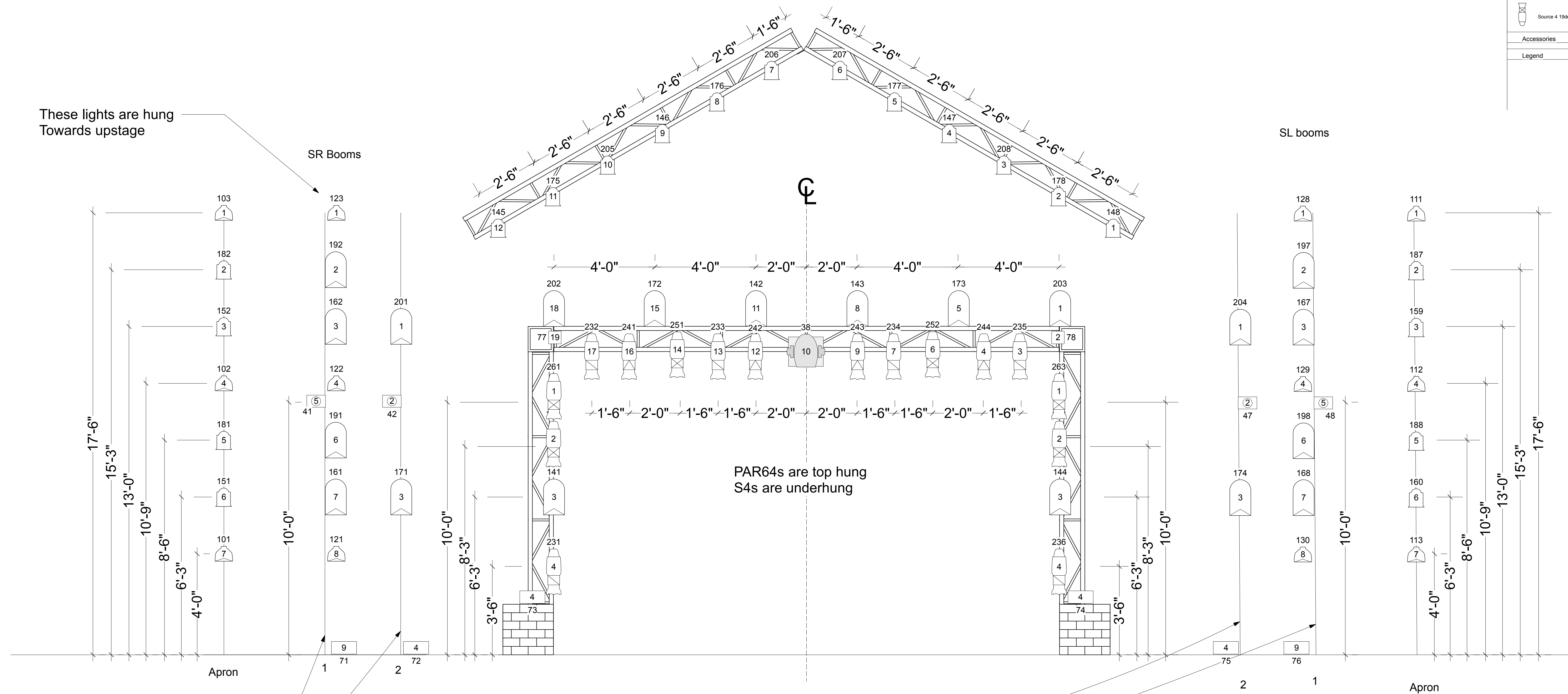
Legend

- Purpose
- Color
- Unit Number
- Channel

These lights are hung Towards upstage

SR Booms

SL booms



PAR64s are top hung
S4s are underhung

The dimensions on these lights is the same as the Apron Boom

Ball State University Department of Theatre and Dance			
Next to Normal			
Director:	Beth Turcotte	Scale:	1/2" = 1' - 0"
Scenic Designer:	R. B. "Mickie" Marie	Date:	8-19-14
Costume Designer:	Patty Daehn	Drawn By:	R. B. "Mickie" Marie
Lighting Designer:	R. B. "Mickie" Marie	Sound Designer:	Matthew Tibbs
Drawing:	Hanging Plot Truss and Booms	Drawing #	3 of 5